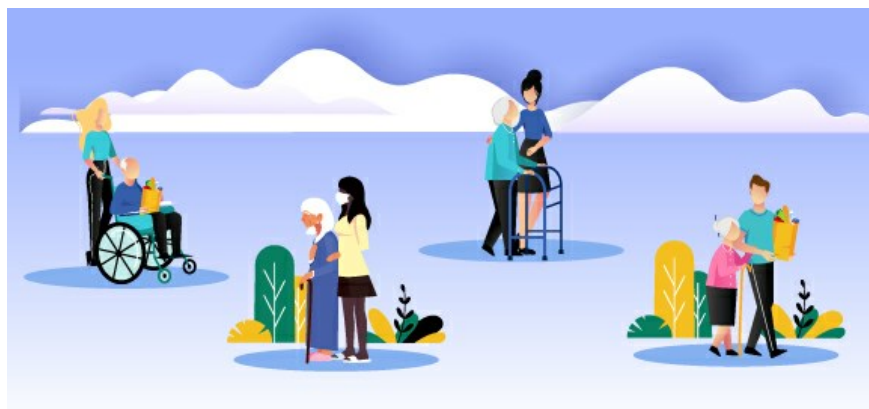


Dear TWF friends



### Supporting Caregivers

*"In the process of co-creating a caregiver-friendly society, an innovative bottom up gender-responsive model needs to be adopted to provide practical solutions."* – Dr Vivian Lou, Director, Sau Po Centre on Ageing, The University of Hong Kong

The care and support given to older people and dependent adults has been in the spotlight since the start of social distancing and public health measures. Pre-pandemic, the ageing population and growing costs of elder care in Hong Kong were critical issues, but COVID-19 has presented a renewed urgency, with demands on finite health care services and increasing costs to society, employers, families and individuals.

Older people are particularly vulnerable to the virus, especially those with pre-existing conditions. At the same time, many care homes, day centres and other services are limited, and medical treatments delayed or cancelled. All this leads to a significantly increased burden of unpaid care work, the majority of which is taken up by women, many of whom are juggling this role in addition to their job.

Informal caregivers face significant challenges which have been exacerbated under COVID-19 and women are particularly affected. Our joint research last year on working dementia caregivers showed women were more likely than men to be stressed in juggling multiple roles, have financial pressure, and not have adequate support networks. While this is only one example, there are likely similarities in the type of issues faced by those caring for elderly dependents with diverse needs.

 [Read More](#)

## UPCOMING EVENT



### International Women's Day 2021 Virtual Lunch - Join Us!

Join us on **March 5, 2021** to commemorate International Women's Day when we highlight the achievements of women and reaffirm our commitment to building a gender balanced Hong Kong.

We are delighted to shine a spotlight on the art and creative industries through conversations with industry experts and trailblazers on the theme **'Scripting Our Future – A Gender Equal Narrative'**. The power of the arts and creative industries is in their ability to both portray reality and transcend it, reshaping the story into a more profound idea of what is possible. It is precisely this imagination of possibility that is needed as we move forward. More details of the exciting event programme will follow.

To register for an individual ticket please click [here](#). Please note tickets are available on a first-come-first-served

basis.

Please email [Development@twfhk.org](mailto:Development@twfhk.org) for more information on sponsorship opportunities.

## PROGRAMME UPDATES



### Mentoring Programme: Strategic Leadership Panel

On January 19, our Mentoring Programme participants took part in the first Leadership Curriculum Session of this cycle on strategic leadership. Moderated by Shirman Lai | ANZ, panelists Diana Wu David | Future Proof Lab, Jenny Chang | Habitat for Humanity Hong Kong, and Joshua Wang | Goldman Sachs discussed different leadership styles, strategic skillsets and traits needed to stay relevant and thrive in this ever-changing landscape. Thank you Diana, Jenny, Joshua and Shirman for sharing your expertise and insights.

## IN THE SPOTLIGHT



### TWF CEO Speaks at The Amber Foundation

On January 14, TWF CEO Fiona Nott participated in a workshop hosted by The Amber Foundation on "The Power of Interview Skills to drive your Career" as part of EMPOWER, an initiative for ethnic minority women to develop their business and personal skills. Fiona spoke about the status of women and girls in Hong Kong, focusing on challenges facing ethnic minority women and girls. She also served as a Group Leader for ethnic minority university women, sharing insights from her career journey and offering advice on their career ambitions.

### TWF submission to the 2021-22 Budget Public Consultation

On Monday, TWF made its submission to the Hong Kong 2021-22 Budget Public Consultation recommending seven areas for increased funding. All are critical to address the immediate and longer term challenges and inequalities that women and girls: domestic violence, sexual violence, poverty, eldercare services and caregiver support, female workforce participation, gender stereotypes, and data collection / research.

[Read our submission here](#)



## SUPPORT TWF!



### Sparky & Benny's Big Home Mystery

TWF is delighted to be one of the beneficiaries of 'Sparky & Benny's Big Home Mystery.' Authored by TWF Mentoring Programme alumnus, Janice Lao, and her daughter, this illustrated educational book on climate change (targeting 7-11 year olds) follows the story of two young whale friends on a mission to find out why they are losing their homes, who is responsible and how they can stop it from happening.

[Order your copy today!](#)

## Virtual TWF Talk at HKU on Women, Language and the Media

Join Lisa Moore, TWF's Research & Advocacy Director, for a virtual talk on "Women, Language & the Media" as part of HKU Art Faculty's Committee on Gender Equality and Diversity's Knowledge Exchange Series on Gender & Language. Moderated by Dr Li Chong | HKU, the talk will explore understanding the critical role media and language play in shaping attitudes towards women in society and how we can all take action to create a gender equal narrative.

**Date:** Tuesday, February 2

**Time:** 5.00pm

via Zoom

COMMITTEE ON GENDER EQUALITY & DIVERSITY  
KNOWLEDGE EXCHANGE SERIES

# Gender & Language.

WOMEN, LANGUAGE AND THE MEDIA:  
UNDERSTANDING THE ISSUES AND TAKING  
ACTION TO CREATE A GENDER EQUAL NARRATIVE

SPEAKER: LISA MOORE, THE WOMEN'S FOUNDATION

Media is a powerful tool for both perpetuating harmful gender norms and changing them. Join us to explore the critical role media and language play in shaping societal attitudes towards women and gendered expectations at home, at work and in broader society. How do we harness the power of media to change gender attitudes and stereotypes? How do we address the way society normalises language and behaviours that exacerbate gender inequalities and a culture of violence against women? This talk will overview these issues and share practical ways to advance gender equality in Hong Kong.

Lisa Moore is Director of Research, Advocacy and Communications at The Women's Foundation (TWF). She oversees TWF's independent, collaboratively produced research on critical, under-discussed gender issues. She also leads advocacy efforts that aim to challenge and transform existing attitudes and behaviours that are preventing women and girls from fully participating in society.



[Sign up here](#)

## WHAT WE'RE READING

### Gender Equality

- [Cancer-stricken Filipino domestic worker gets key legal backing from Hong Kong's equality watchdog](#) (SCMP)
- [Why won't men wear their masks over their noses?](#) (Fortune)
- [Expert's take: Five steps to make the COVID-19 social protection and jobs responses work better for women](#) (UN Women)
- [Biden, Harris Form A White House Gender Policy Council](#) (Forbes)
- [US news giants put more women in the White House](#) (Guardian)
- [First Netflix Inclusion Report Shows Gains for Women, Minorities](#) (Bloomberg)
- [Tech can reach the world's unbanked women – but only if they tell us how it should work](#) (WEF)
- [South Korean women hit back as old gender roles return](#) (NBC)
- [Three ways to help women-led businesses recover from the pandemic downturn](#) (SCMP)
- [Master brewer: the woman excelling in Japan's male world of sake](#) (Guardian)

### Sexual Violence & Harassment

- [平機會開設反性騷擾熱線 內容保密為受害人提供協助](#) (HKET)
- [Puerto Rico declares a state of emergency due to gender-based violence](#) (CNN)
- [Vive l'indifférence! Netflix's Room 2806 exposes France's #MeToo apathy](#) (Guardian)
- [Men enlisted to fight 'tradition' of gender violence in Cambodia](#) (Reuters)
- [An All-Female Taxi Service Is Tackling Gender Violence in Cape Town](#) (Global Citizen)

### Masculinity

- [Research: masculine offices add to the burden of female office workers during COVID-19 pandemic](#) (The Conversation)

9A Chun Wo Commercial Centre, 23-29 Wing Wo Street, Sheung Wan

[info@twfhk.org](mailto:info@twfhk.org) [twfhk.org](http://twfhk.org) [25928265](tel:25928265)

You received this e-mail because you subscribed to The Women's Foundation newsletter.  
To unsubscribe, please [click here](#).